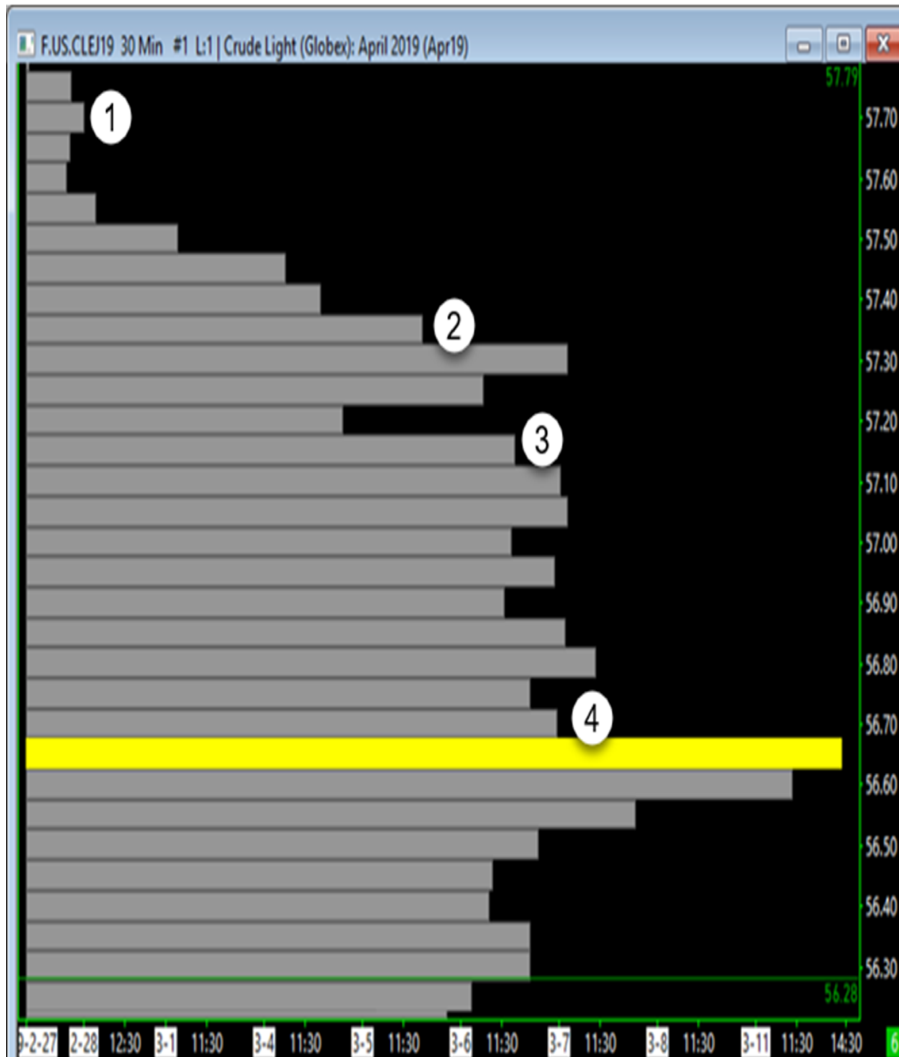


Sierra chart Volume by Price



Bluewater InsideEdge Trader

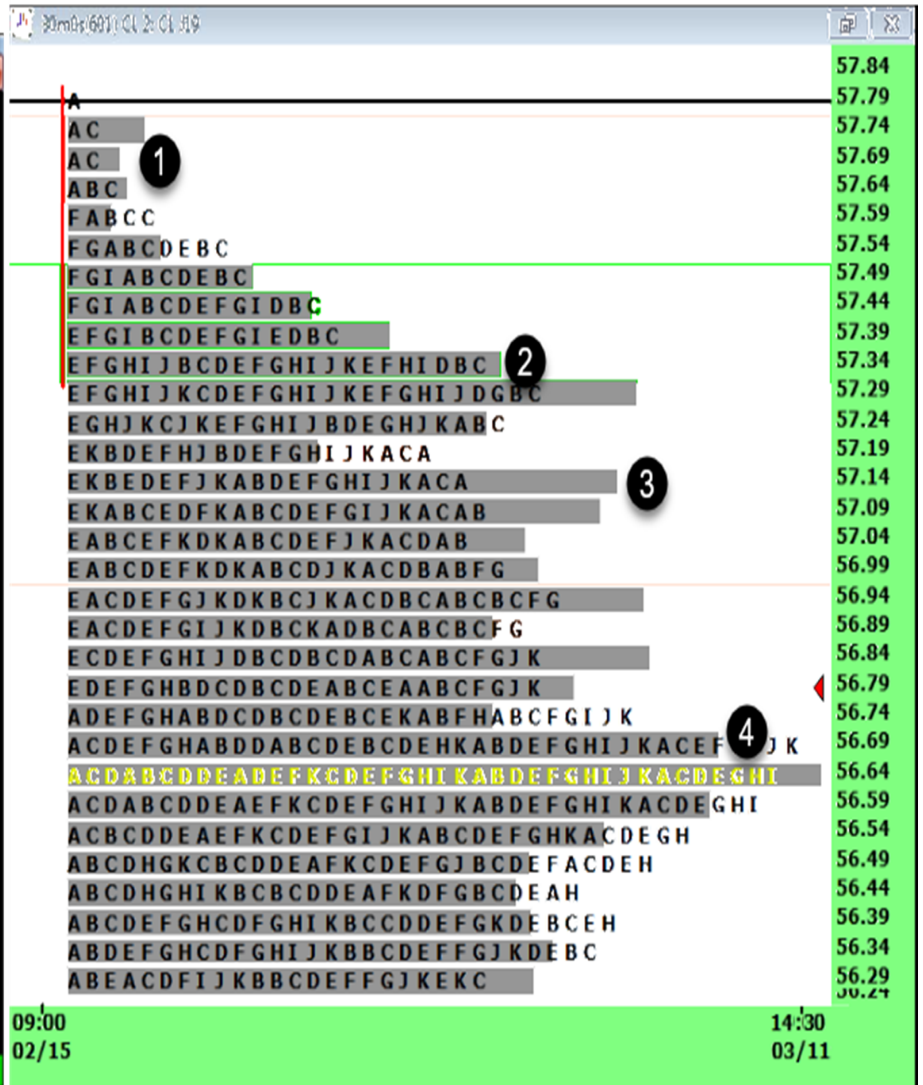


Chart Settings - F.US.CLEJ19 30 Min #1 - Crude Light (Globex): April 2019



Main Settings

Advanced Settings

Advanced Settings 2

Advanced Settings 3

Alerts

Date Range In File (yyyy-mm-dd):

From: 2018-12-02

To: 2019-03-13

☐ Use Number Of Days To Load

Days To Load: 1

Market  
Depth:

☐ Adjust Proportional With Bar Period

10

☒ Use Date Range

From: 2019-02-15

To: 2019-03-11

Price Display Format: .01

Tick Size: 0.010000

☒ Auto-Set From Data Feed

Volume at Price Mult.: 1

Symbol:

F.US.CLEJ19

Find

Trade and Current Quote Symbol:

Find

☐ Use As Trade Only Symbol

Chart Data Type:

Intraday Chart

Intraday Chart Bar Period:

Bar Period Type:

Days-Mins-Secs Per Bar

Setting: 0-30-0

Gap Fill - None

New Trend Bar V

Session Times (HH:MM:SS):

Start Time: 09:00:00

End Time: 14:30:00

☐ Use Evening Session

Evening Start 00:00:00

Evening End Time: 23:59:59

☒ New Bar At Session Start

Do Not Load Weekend Data

☐ Automatically Rollover Futures Symbol

☐ Save Days to Load, Intraday Bar Period, Graph Draw Type as Default

Historical Chart Bar Period:

☒ Days:

1

☐ Weekly

☐ Monthly

☐ Quarterly

☐ Yearly

Graph Draw Type:

Candle Price Volume Bars

Candle Price Volume Bars Holl

Point and Figure XO

Renko Bricks

Renko Bricks with Wicks

Blank

Scale

Apply Global Symbol Settings

Edit Global Symbol Settings

OK

Cancel

Apply

Help

## Volume By Price Settings

Input Name	Input Value
Draw Mode (In:30)	Volume Profiles
Number Of Periods Back To Reference (In:31)	0
Ticks Per Volume Bar (In:32)	5
Volume Graph Period Type (In:33)	From Start Date-Time to End Date-Time
Set as Independent Volume Profile for TPO Chart (In:107)	No
Time Period Type for 'Fixed Time' (In:34)	Days
Time Period Length for 'Fixed Time' (In:35)	1
Number of Bars for 'Based On Bar Count' (In:36)	1
Volume Per Profile for 'Specified Volume' (In:2)	1
Number Of Days To Calculate Volume Profiles (0=All Days) (In:4)	0
Start Date (In:37)	2019-02-15
Use Different Start Time (In:38)	No
Start Time (In:39)	09:00:00
End Date (In:40)	2019-03-11
End Time (In:41)	14:30:00
Use Separate Profile For Evening Session (In:42)	No
Exclude Evening Session Profiles Except For Last Day (In:66)	No
Maximum Volume Bar Width Type (In:43)	Automatic
Maximum Volume Bar Width Percentage (In:44)	70
Right Align Volume Bars (In:45)	No
Display Volume in Bars (In:46)	None
Always Display Last Profile Within View (In:47)	Yes
Volume Bar Calculation Method (In:48)	Total Volume
Bid Volume and Ask Volume Coloring Method (In:49)	None
Draw Outline When Coloring Bid Volume and Ask Volume (In:50)	Yes
Use Transparent Draw Style (In:52)	No
Transparency Level (In:53)	50
Highlight Value Area (In:54)	No
Extend Value Area (In:55)	None
Value Area Percentage (In:56)	70
Highlight Point Of Control (In:57)	Yes
Extend Point Of Control (In:58)	None
Extend Volume Weighted Average Price (In:108)	None
Align Volume Numbers To Base Of Volume Bars (In:60)	Yes
Volume Bars Draw Method (In:61)	Filled Volume Bars
Allow Side-By-Side Profiles on Right Side (In:62)	Yes
Draw Profile Outline Enclosing Bars (In:63)	No
Draw Peaks & Valleys (In:64)	None
Peaks & Valleys Sensitivity (In:65)	10
Include High/Low in Peaks & Valleys (In:67)	No
Align To Far Right (In:68)	No
Do Not Overlap DOM Graph (In:3)	Yes
Extend Peaks & Valleys (In:70)	End Of Period
Highlight Value Area High and Low Only (In:71)	No
Calculate Developing POC and Value Area (In:72)	No
Color Code Volume Bars Based on Percentage of POC (In:73)	No
Number of POC Ranges to Color (In:84)	10
0%-10% POC Color (In:74)	R: 192, G: 0, B: 0
10%-20% POC Color (In:75)	R: 255, G: 0, B: 0
20%-30% POC Color (In:76)	R: 192, G: 128, B: 0
30%-40% POC Color (In:77)	R: 255, G: 128, B: 0
40%-50% POC Color (In:78)	R: 255, G: 192, B: 0
50%-60% POC Color (In:79)	R: 255, G: 255, B: 0
60%-70% POC Color (In:80)	R: 0, G: 192, B: 0
70%-80% POC Color (In:81)	R: 0, G: 255, B: 0
80%-90% POC Color (In:82)	R: 0, G: 128, B: 128
90%-100% POC Color (In:83)	R: 0, G: 128, B: 255
Display Data in Chart Values Window (In:93)	No
Display Entire Profile Volume (In:94)	No
Display Entire Profile Ask Volume-Bid Volume (In:95)	No
Display Entire Profile High & Low (In:96)	No
Display Entire Profile Start & End Date-Time (In:97)	Yes
Display Entire Profile Study Name (In:98)	No
Display Entire Profile Study ID (In:99)	Yes
Display Point of Control (In:100)	Yes
Display Profile Volume Weighted Avg Price (In:101)	No
Display Volume Above/Below Point of Control (In:110)	No
Display Volume Above/Below Last Price (In:111)	No
Calculate Mean Price and Standard Deviation Bands (In:102)	No
Volume Bar Minimum Width in Chart Bars (In:103)	0
Include Fill Space In Developing Period Width (In:104)	No
Use Large Number Display Formatting (In:105)	No
Minimum Time Period % For Reference Days Back (In:106)	25
Volume Profile Bars Length Relative to All Visible Profiles (In:109)	No